

About the course

LabVIEW- Laboratory Virtual Instrument Engineering Workbench, by National Instruments is a system-design platform and development environment for a graphical language – visual programming language, LabVIEW is commonly used for data acquisition, instrument control, and industrial automation on a variety of platforms including Microsoft Windows etc. Smart developments in instrumentation, LabVIEW intelligence and interfaces are incorporated in Test & Measurement instruments. Experience in LabVIEW based developments and in testing & maintenance is highly acknowledged. globally To be at par with global trends and technology, proficiency in LabVIEW is necessary for engineers in both academic and industrial careers.

Course includes - WHY LabVIEW, basic logic development using “C” programming, concept of parallel programming using LabVIEW instead of using multi core CPUs, LabVIEW graphical development system, virtual instrumentation approach, hands on includes - Front Panel / Block Diagram, Toolbar /Tools Palette, wires, data types, variables, connector panel, math in LabVIEW, data flow programming, Components of a LabVIEW Application - Creating a VI, Data Flow Execution, Additional Help - Finding Functions, debugging techniques, context help window, elements of typical program, clusters, loop, how to make decisions, Getting Data into your Computer- Data Acquisition Devices - NI-DAQ, concept of PC add on cards and addressing, ADDA card, image acquisition card, Communication protocols – RS232, USB, GPIB/IEE488, introduction to cDAQ and C modules.

Eligibility : M.Sc/ BE (E&TC / Instrumentation / Computer / Electrical / Mechanical / IT)

Under Graduate , Post Graduate Students Faculty and Professionals

Course Fees:

Students: Rs.10,000

Professionals: Rs. 25,000

(Fee includes breakfast, and lunch)

Accommodation Charges (course duration plus two days)

Students- Rs.500/-

Faculty / Professionals- Rs.1000/-

For application form visit

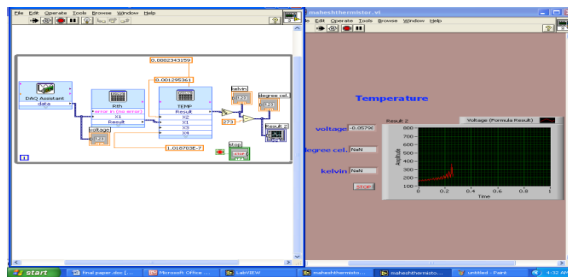
(<http://www.ncl-india.org/files/SDP/Default.aspx>)

MAILING ADDRESS FOR SENDING APPLICATION

Coordinator,
CSIR-NCL Skill Development Program,
CMC Division,
CSIR- National Chemical Laboratory
Dr. Homi Bhabha Road, PUNE-411008,
India.

Email: ncl.sdtc@ncl.res.in

(Application will also be accepted by email)



Council of Scientific and Industrial Research

National Chemical Laboratory

CSIR –Integrated Skill Initiative



Skill development Course in

LabVIEW basics and applications

Course Code –SDP-NCL 15

Batch : Dec. 14, 2018 - Jan. 3, 2019

No. of participants - 12

Selection: First come first serve basis

Dr. (Mrs) Neelima Iyer, Sr. Principal Scientist at NCL having more than 25 years experience in R & D and teaching is the mentor and faculty for this course. Hands on and lectures - 75%. & 25% respectively.